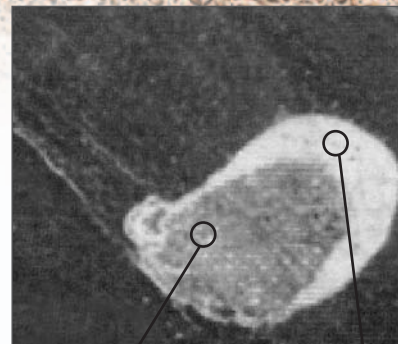


Acroseal Sealer

A Perfect Start for Successful Restorations

Acroseal from Septodont is a superior endodontic sealer that seals the canal permanently, eliminating worries about leakage and minimizing the risks of root canal treatment failures.

- **Acroseal heals as it seals.** The unique chemistry of an advanced epoxy matrix containing calcium hydroxide creates a high intra-canal pH during final obturation that helps to improve periapical healing.
- **Acroseal seals in long-term success.** Acroseal adheres to the canal walls and gutta percha points. Its insolubility in water provides reliable leak-free obturation while its low viscosity allows it to flow into accessory canals for a superior fill every time.
- **Acroseal is eugenol-free.** It is fully compatible with most cements and core materials, thus improving reliability of bonded post and core restorations.
- **Acroseal, Septodont's most advanced root canal sealer, is now available in automix syringes.** This easy-to-use dispensing system delivers a homogeneous mix each time without the mess. Acroseal is also available in original tubes.



Gutta-percha

Acroseal

◀ Gutta-percha sealed with Acroseal sealer in an endodontically treated tooth.

Seal your patient's restorative success with Acroseal —
the perfect mix for a healthy foundation!



Acroseal is now available in an Automix Syringe

Acroseal, the superior endodontic sealer that seals the canal permanently, is now easier to use with the automix syringe delivery system.

The new syringe system with single use mixing tips:

- delivers a consistent homogenous mix each and every time
- eliminates messy hand mixing and clean-up
- saves time
- reduces the risk of cross contamination

Acroseal is also available in original tubes.

Acroseal Characteristics

Features	Benefits
Zero solubility in water	Insoluble, leak-free obturation for reduced risk of late failure.
Adheres to canal walls and gutta percha points	Excellent sealing quality translates to less risk of re-infection.
Highly compatible	Can be used with all gutta-percha obturation techniques, cold or warm.
Low viscosity	Fills accessory canals so that there is less risk of re-infection.
Advanced epoxy matrix containing calcium hydroxide	Creates high intra-canal pH during final obturation that helps to improve periapical healing.
Eugenol-free	Improved compatibility with modern adhesive restoration techniques.
Chemical polymerization	Helps reduce shrinkage.
Non-phenoplastic resin	Allows easy removal with Endosolv E for retreatment and/or post space preparation.
Radio-opaque	Facilitates mid and long-term follow up.

Acroseal Usage

- Coat the gutta-percha master point with Acroseal and insert it slowly into the root canal.
- Complete the root canal obturation with your usual technique.
- Working time is 2 hours.
- Setting time is up to 24 hours.

Product Information

Acroseal Automix Syringe

2 Automix Syringes (8.6g each); 15 Mixing Tips;
15 Intra-oral Tips; 1 Pad

Acroseal Tubes

2 Tubes (1 x 8.5g Base Paste Tube,
1 x 9.5g Catalyst Paste Tube); 1 Crossed-ruled
Mixing Pad

**To order Septodont Acroseal,
contact your local dental dealer.**

